



# SAS Energy Forecasting

Dorian Hodorogea

SAS Analytics Presales



# Introduction to SAS

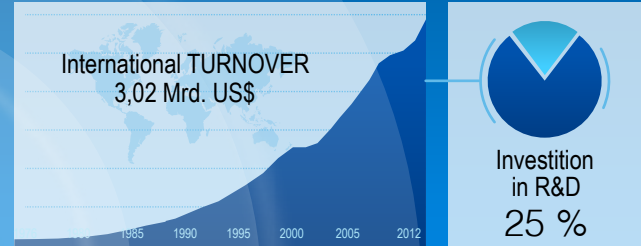


Dr. James H. Goodnight  
CEO & Gründer von SAS

Customer around the globe trust SAS at more than 65.000 locations – 91 of Top100 FORTUNE Global 500@ companies– trust SAS solutions

- Largest privately held software company
- Founded 1976 in Cary, North Carolina
- 13.000 employees worldwide
- Since 2002 represented in Romania
- Great Place to Work

Constant Revenue increase  
1976-2014



Analysts views

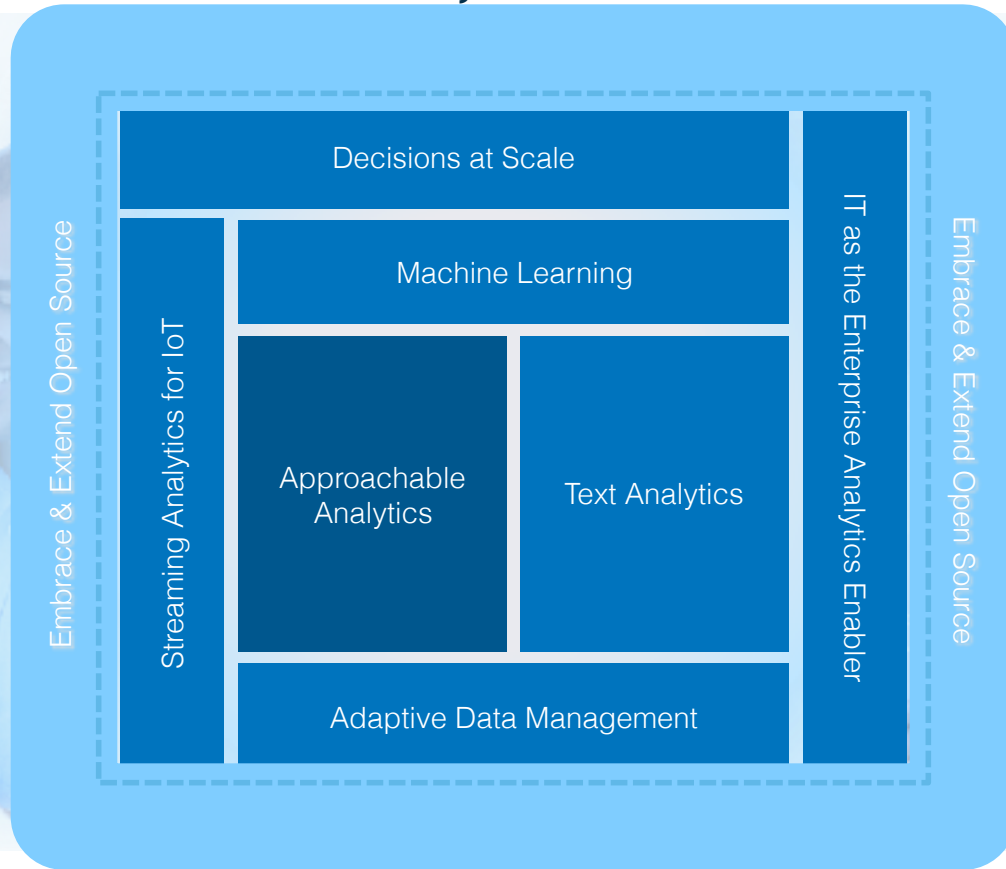



Value generated continuously




# Background on Analytics

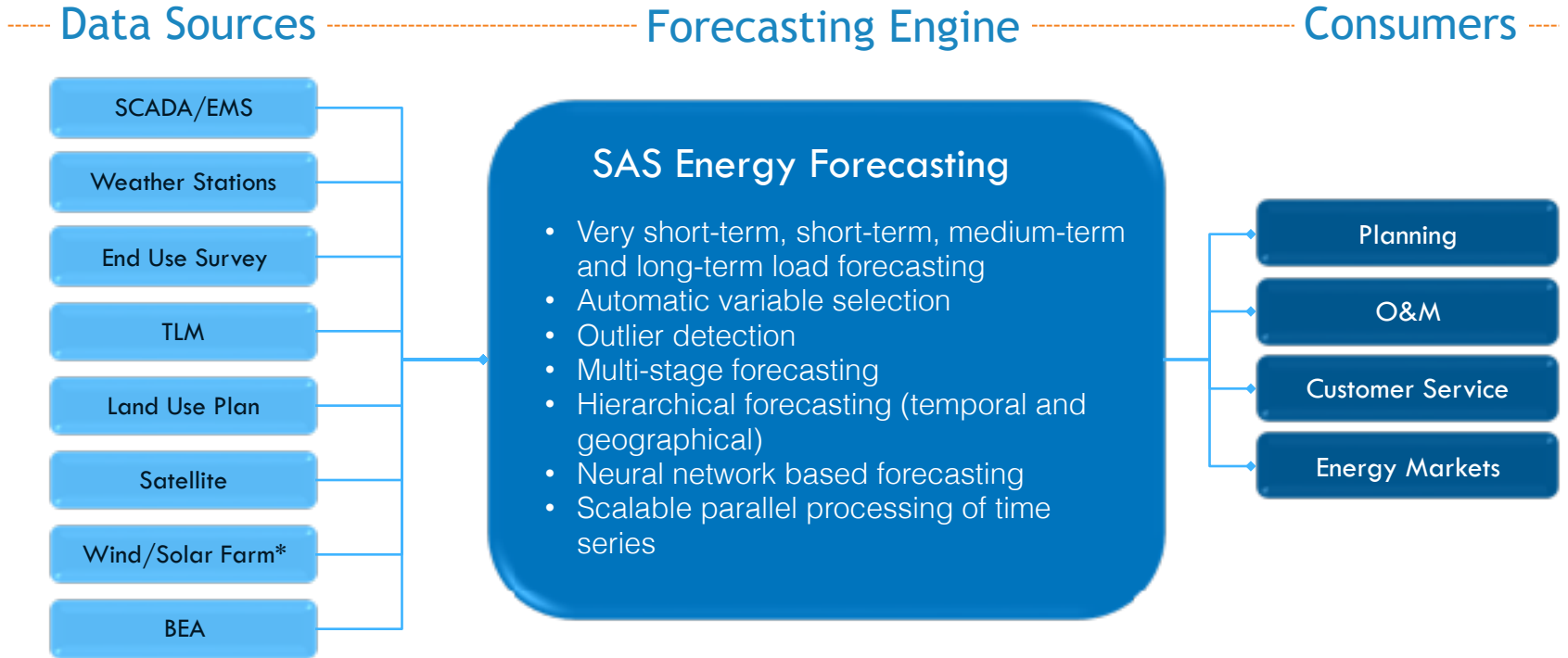
# SAS Analytics in Action

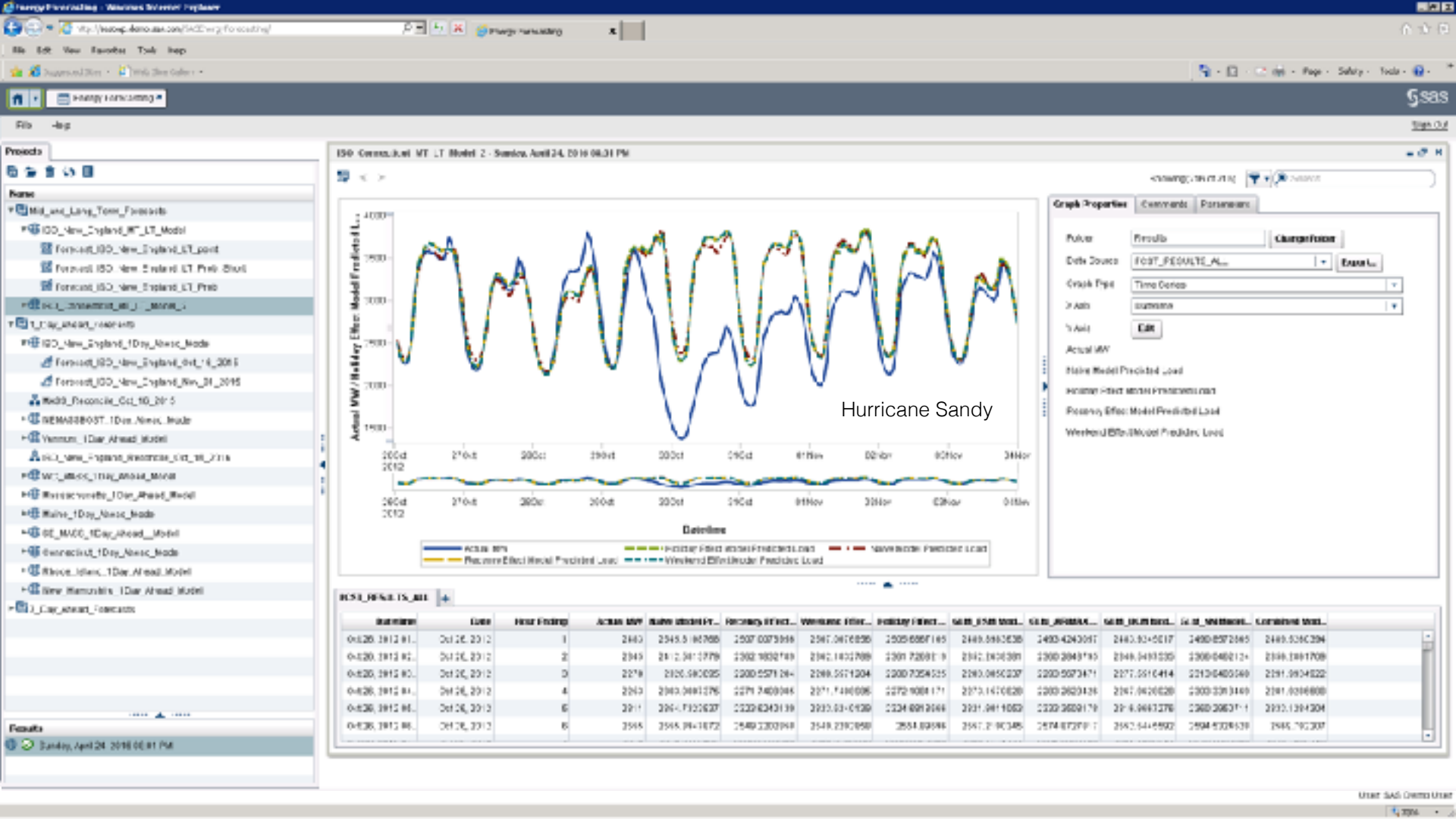




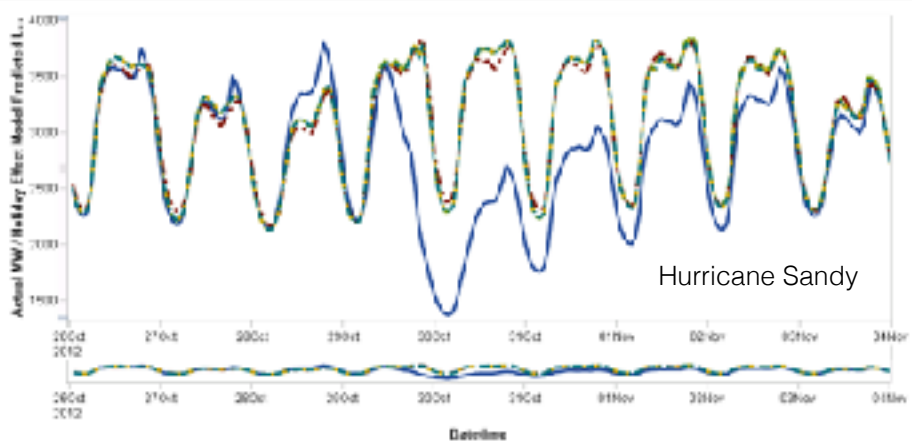
# SAS Energy Forecasting

# Overview





ISO-Centerville MT LT Model 2 - Sunday, April 24, 2016 08:31 PM



Actual MW  
 Forecast Hubby Elec Model Predicted Load  
 Forecast Effect Model Predicted Load  
 Forecast Hubby Elec Model Predicted Load  
 Forecast Effect Model Predicted Load  
 Weekend Effect Model Predicted Load

Graph Properties | Comments | Parameters

Filter: Forecast | Change Filter

Data Source: FOST\_RESULTS\_AL... | Export

Graph Type: Time Series

X Axis: Summary

Y Axis: Edit

Actual MW  
 Hubby Model Predicted Load  
 Forecast Hubby Elec Model Predicted Load  
 Forecast Effect Model Predicted Load  
 Weekend Effect Model Predicted Load

FOST\_RESULTS\_AL

NUMBERS	DATE	FORECAST	ACTUAL MW	HUBBY ELECTRIC...	EFFECTIVE...	WEEKEND ELECT...	EFFECTIVE...	CAST...	CAST...	CAST...	CAST...	CAST...	
0-820-3812-81	Oct 26, 2012	1	2443	2345.5	167086	2507.0373355	2367.2676236	2505.6867165	2449.5862636	2493.4243067	2443.9310617	2493.8372665	2449.5336334
0-820-3812-82	Oct 26, 2012	2	2343	2412.36	1779	2302.1832749	2342.1432768	2301.7269119	2342.1832691	2300.2043749	2344.3493535	2300.0462124	2344.1891709
0-820-3812-83	Oct 26, 2012	3	2278	2320.582025	2200.0271264	2268.2571204	2300.7324525	2263.0450237	2200.0273671	2277.2510414	2213.0485269	2281.3924822	
0-820-3812-84	Oct 26, 2012	4	2263	2363.3691276	2271.7469365	2271.7469365	2272.9081171	2273.1470628	2203.2623126	2267.042628	2303.3363449	2281.0316888	
0-820-3812-85	Oct 26, 2012	5	2211	2361.7325627	2322.6243139	2313.0310230	2324.6212664	2321.2611652	2322.2623179	2214.2661276	2360.2663111	2313.1391204	
0-820-3812-86	Oct 26, 2012	6	2345	2345.3641672	1549.2303349	2549.2303349	2549.2303349	2544.93366	2347.2193345	2574.6727711	2343.4416992	2594.6326539	2345.792307

Sunday, April 24, 2016 08:31 PM





# SAS Energy Forecasting High-level Benefits

- Produce forecasts that reflect business realities, to plan future events with confidence
- Do more – better – with existing planning and forecasting resources
- Make better energy trading and contract purchase decisions
- Use all your data, old and new
- Handle increasingly large volumes of data efficiently



# Thank you

SAS.com